

## Senacre Wood Primary Child Friendly Safeguarding Policy

At Senacre Wood Primary, all of the adults think that your health, safety and welfare are very important; we want to make sure that you feel looked after, safe and happy wherever you are. This policy looks at how every grown-up in our school can help make you feel safe.

### How does Senacre Wood Primary School work to keep you safe?

- 🌱 All our staff work to provide you with a safe environment to learn in.
- 🌱 We help to ensure that you are safe, at home as well as in school.
- 🌱 We teach you how to keep yourselves, and others, to stay safe.
- 🌱 We support you and your family to make sure nothing stops you from being healthy or developing properly.

### Don't keep it a secret if someone is:

- 🌱 Bullying you.
- 🌱 Hurting you physically.
- 🌱 Saying unkind things to you; either to your face or online.
- 🌱 Touching you when you don't want them to.
- 🌱 Trying to make you try things when you don't want to.

*You must tell someone at school so we can help.*

### Need to Talk?

*If you need to talk, we will always listen.*

All adults in school are trusted adults, who you can talk to at any time; the staff below are specially trained to help you and your family.

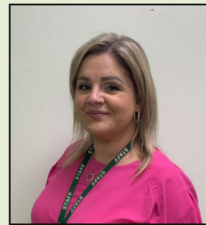
Mrs Sweeney



Mrs Dixon



Mrs Baksh



Mrs Palmer



Mrs McKenzie



*If you are finding it hard to speak to an adult in school, leave a note in your class Worry Box or Mrs Palmer's Post Box.*